



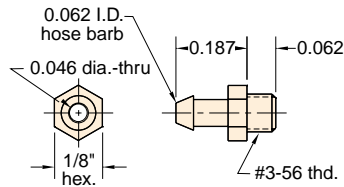
ADAPTER FITTINGS

Material: Brass

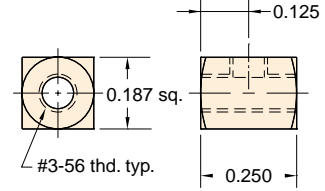
Thread: M2.5 - 0.45 (3-56 US equiv.)

Use: Threads into Clippard subminiature cylinder; fits 1/16" I.D. hose

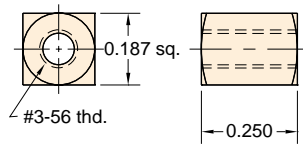
11750-2



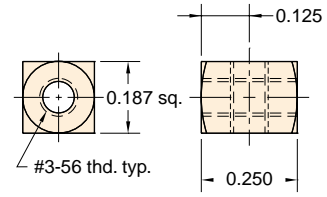
11749-2



11749-1

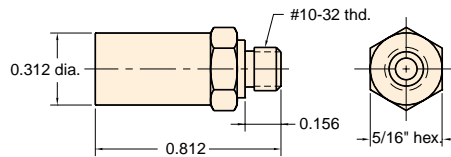


11749-3



15070

#10-32 Muffler



Material: Nickel plated brass body sintered stainless steel muffler (60 micron)

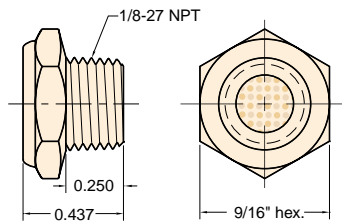
Thread: #10-32

Gasket: Buna-N furnished

Use: To muffle exhausts for quiet system operation

15080

1/8" NPT Muffler



Material: Solid brass body; sintered stainless steel insert (100 micron)

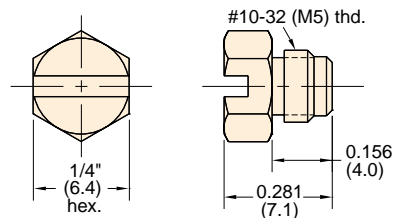
Thread: 1/8" NPT

Use: To muffle exhaust for quiet system operation

Options: (-NP)

11755

#10-32 Screw Plug



Material: Brass

Thread: #10-32 (M5)

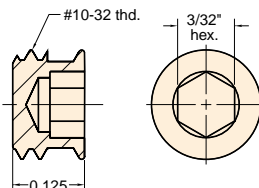
Gasket: Buna-N furnished package only

Use: For plugging unused ports in manifolds, air lines and other devices

Options: (-NP), (-M5)

0035-2

#10-32 Headless Screw Plug



Material: Stainless Steel screw plug

Thread: #10-32

Use: For plugging unused ports in manifold, air lines and other devices that require a flush surface plug; use 3/32 Allen hex wrench to install

Note: Thread sealant recommended